

Revisión de las especificaciones de datos (versión 3) del anexo III relacionadas con la biodiversidad: Regiones biogeográficas, Hábitats y Biotopos, **Distribución de especies**

Francisco Pando



Taller GBIF: Gestión, uso y publicación de datos de biodiversidad y patrimonio natural: Armonización y publicación de datos y metadatos conforme la INSPIRE

Aula de informática
Real Jardín Botánico -- CSIC
Madrid, 17-18 de junio de 2015

La guía técnica de especificación de datos

- <http://inspire.ec.europa.eu/>
- <http://inspire.ec.europa.eu/index.cfm/pageid/2>

► [INSPIRE Data Specification on Species Distribution – Technical Guidelines](#) 10.12.2013

METADATA FOR DOCUMENT

SUBJECT	PUBLISHER	SOURCE	LANGUAGE	CATEGORY	PUBLICATION DATE
INSPIRE Data Specification for the spatial data theme Species Distribution	European Commission Joint Research Centre	European Commission Joint Research Centre	en	Data Specifications	10/12/2013
Version: 3.0	Is this the latest version?  YES				
DESCRIPTION					
This document describes the INSPIRE Data Specification for the spatial data theme Species Distribution					
URL					DOCUMENT TYPE
DOWNLOAD THIS DOCUMENT					Technical Guidelines Annex II & III
OTHER VERSIONS					
Download Version v3.0rc3					
Download Version 3.0 rc2					
Download Version 2.0					

A qué apunta la especificación

Definition: Geographical distribution of **occurrence** of animal and plant **species** **aggregated** by grid, region, administrative unit or other analytical unit

Observaciones individuales

The first point to note is that the definition refers to a —distribution of occurrence of a given species. **The definition is not intended to cover the raw field observation data.** Therefore the Thematic Working Group understood occurrence as the spatial representation of a species at a specific location and a specific time period, rather than being equivalent to an observation. Due to some of the use cases of local authorities or scientist, however, **an extended model is provided with the possibility to link to the original observations used as sources for the aggregations.**

[this] includes a **darwinCoreTriple** attribute which allows connection to original observational data that can be accessed from **GBIF** data providers

Conceptos de especies

The concept of a —species is fundamentally a human expert judgement placed on nature, and human judgements in this area, as in many others, are subject to debate, dispute and changes. This means **that there is not yet a consistent taxonomy across Europe**, although progress is being made in this regard

Unidades geográficas

...distributions may be represented in a wide range of formats, such as **points, grid cells at different scales or polygons** of specifically defined areas (analytical units).

“Listas patrón” de especies

EU-Nomen is the preferred reference list to be used. If a taxon is listed in **EU-Nomen**, this reference must be used as first choice. If it is not listed in EU-Nomen, the second choice is **EUNIS**, if not in EUNIS, **Natura2000** can be used,

Atributos

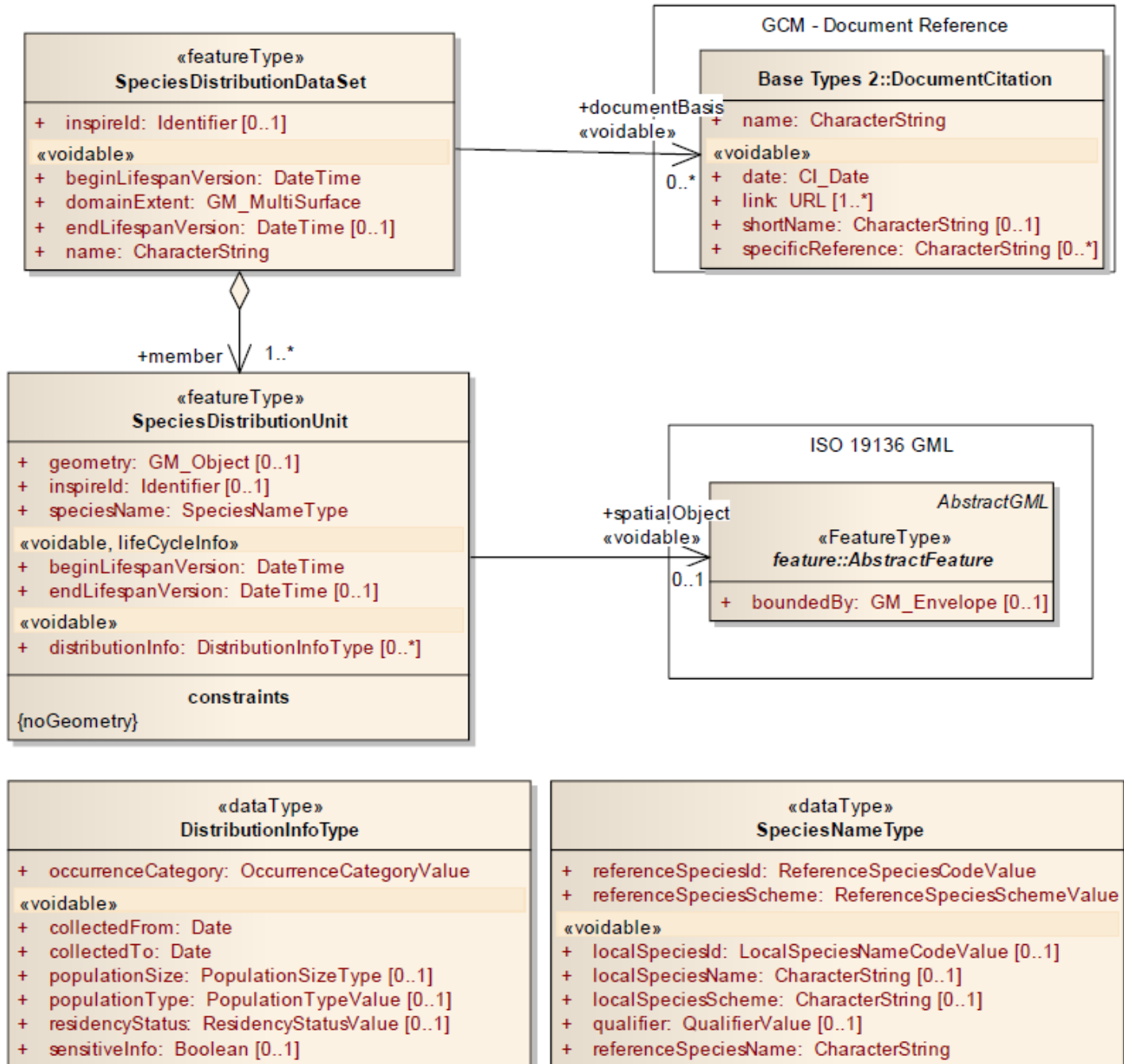
There are a range of attributes that can be associated with the species itself such as formal legal status (EU directives, international conventions, national law), redlist status, national responsibility or other interests - these have yet to be coded. While these may be essential for particular applications, such attribution is **considered beyond the current data specification**

Listas locales de especies

explicitly allows for the retention of the original species name and assigned taxonomic concept recognised and used by the data provider.

Vista general de la clase

class Species Distribution overview



Validación: Esquemas XML

```
<?xml version="1.0" encoding="UTF-8"?>
<correo xmlns="http://www.ideo.es" xmlns:xsi="http://www.ideo.es/xsi"
instance="http://www.ideo.es/correo.xsd">
  <origen>alice@mfom.es</origen>
  <destino>bob@mfom.es</destino>
  <asunto>Avances IDEE</asunto>
  <texto>La IDE de Andalucía se incorporará a la IDEE en breve.</texto>
</correo>
```

❖ Documento XML

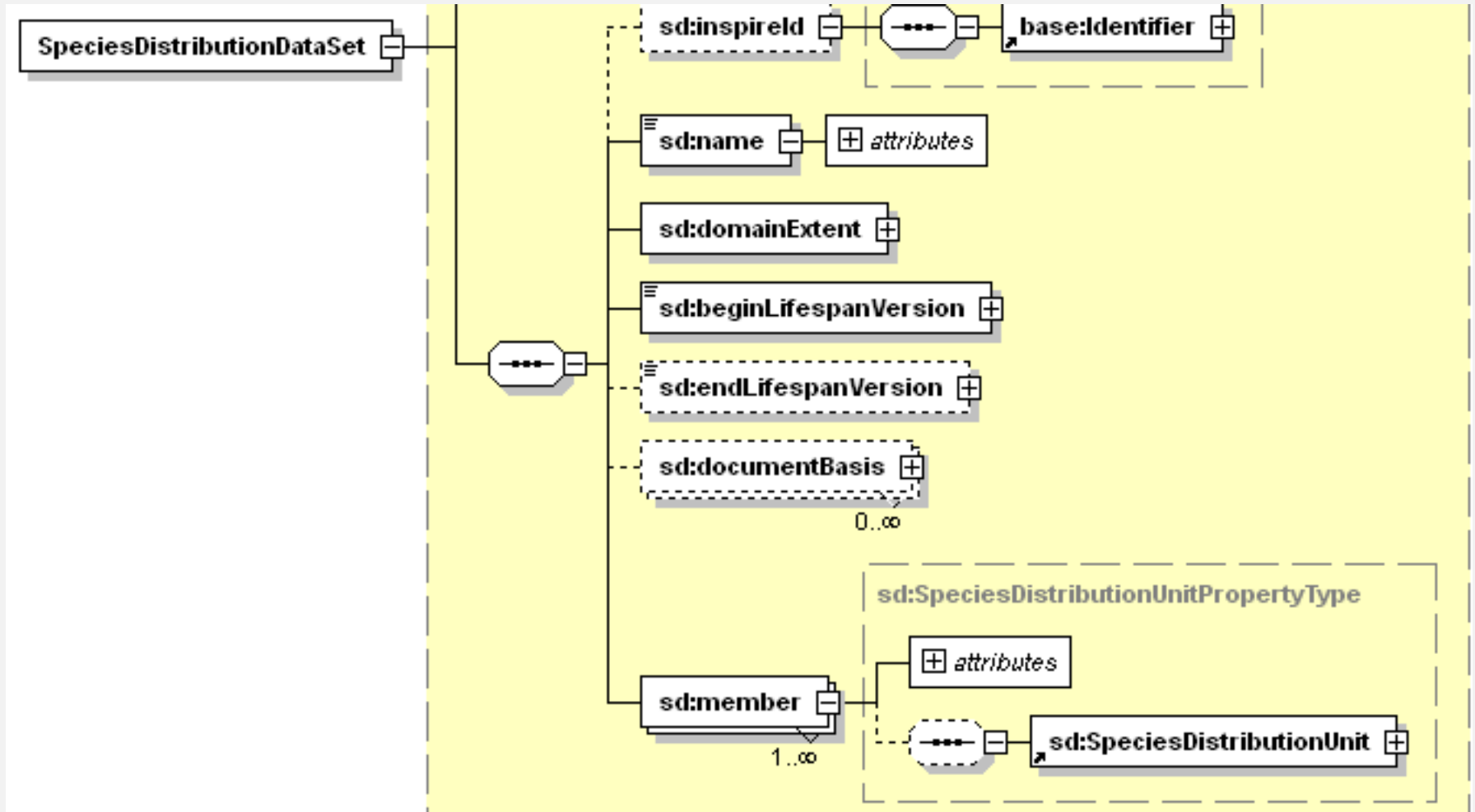
```
<?xml version="1.0"?>
<xs:schema xmlns:xs="http://www.w3.org/2001/XMLSchema"
targetNamespace="http://www.ideo.es"
xmlns="http://www.ideo.es" elementFormDefault="qualified">
  <xs:element name="correo">
    <xs:complexType>
      <xs:sequence>
        <xs:element name="origen" type="xs:string"/>
        <xs:element name="destino" type="xs:string"/>
        <xs:element name="asunto" type="xs:string"/>
        <xs:element name="cuerpo" type="xs:string"/>
      </xs:sequence>
    </xs:complexType>
  </xs:element></xs:schema>
```

❖ Esquema XML

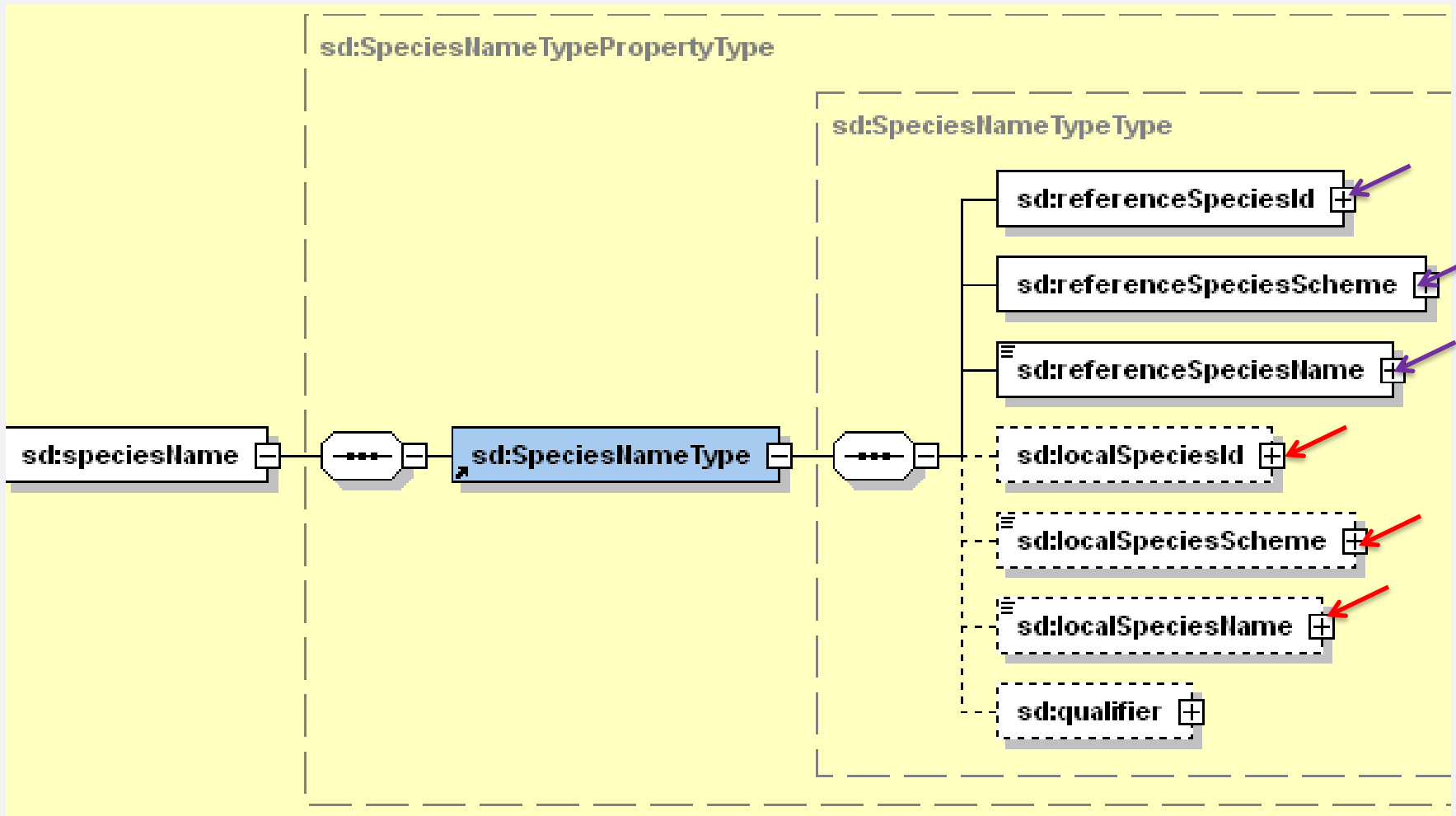


BY

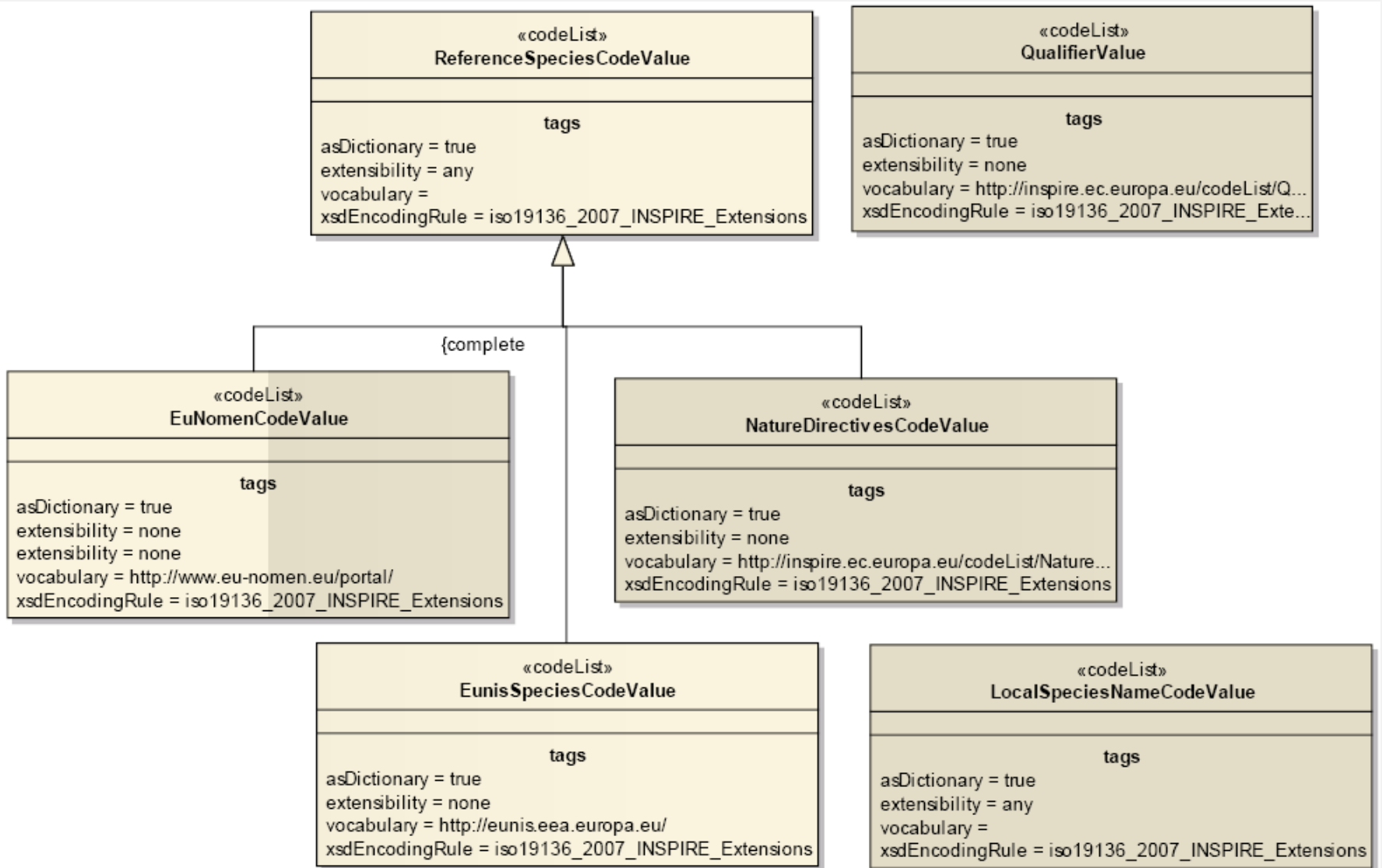
SpeciesDistributionDataSet



SpeciesName



Referencias para especies



Relación entre los conceptos de la lista local de especies y la de referencia

QualifierValue

Name: qualifier value

Definition: This value defines the relation between the taxonomic concepts of a local species name and the reference species name given by reference species identifier or by a reference species scheme.

Extensibility: none

Identifier: <http://inspire.ec.europa.eu/codeList/QualifierValue>

Values: The allowed values for this code list comprise only the values specified in the table below.

congruent

Name: Congruent

Definition: The taxonomic concepts are identical.

includedIn

Name: Included in

Definition: The taxonomic concept of the localSpeciesName is included in the concept of the referenceSpeciesName.

includes

Name: Includes

Definition: The taxonomic concept of the localSpeciesName includes the concept of the referenceSpeciesName.

overlaps

Name: Overlaps

Definition: The taxonomic concepts partially overlap, but each one has a part that is not included in the other.

excludes

Name: Excludes

Definition: The taxonomic concepts exclude each other.

EU-Nomen...

Recommendation 7

EU-Nomen is the preferred reference list to be used. If a taxon is listed in EU-Nomen, this reference must be used as first choice. If it is not listed in EU-Nomen, the second choice is EUNIS, if not in EUNIS, Natura2000 can be used.

EU-Nomen...

<http://www.eu-nomen.eu/portal/taxon.php?GUID=urn:lsid:indexfungorum.org:names:112803>

<http://www.eu-nomen.eu/portal/taxon.php?GUID=urn:lsid:indexfungorum.org:names:354957>

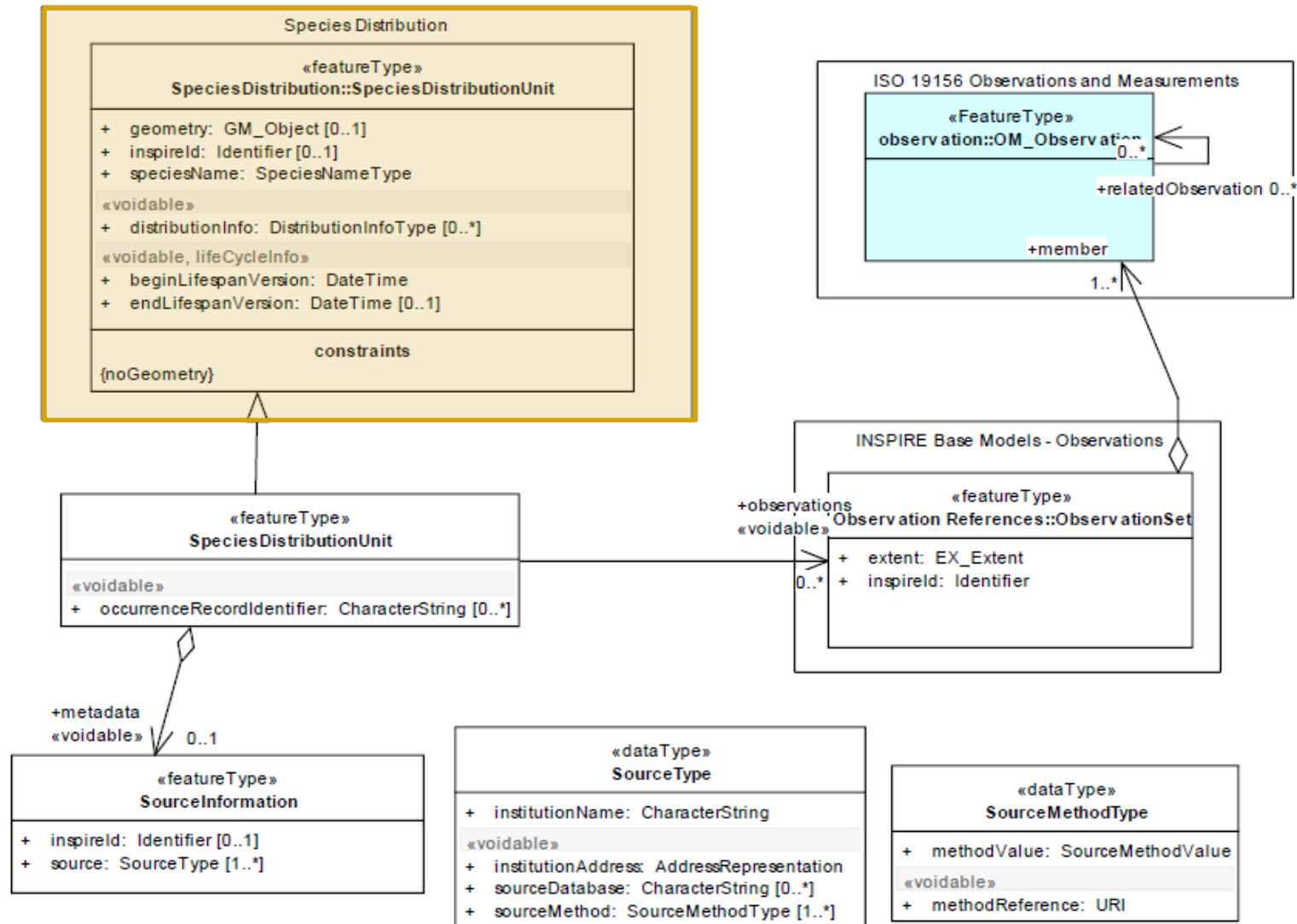
<http://www.indexfungorum.org/names/NamesRecord.asp?RecordID=354957>

Application schema

SpeciesDistributionExtension

- Para expandir los metadatos
- Para ligar una distribución de especie (*SpeciesDistributionUnit*) a las observaciones individuales que la soportan

UML class diagram: Overview of the SpeciesDistributionExtension applicationschema



Observations & Measurements and Sensor Web Enablement-related standards data specification

Framework Documents

- ▶ [Guidelines for the encoding of spatial data 08.04.2014](#)
- ▶ [Guidelines for the use of Observations & Measurements and Sensor Web Enablement-related standards in INSPIRE Annex II and III data specification development 08.04.2014](#)

METADATA FOR DOCUMENT

SUBJECT	PUBLISHER	SOURCE	LANGUAGE	CATEGORY	PUBLICATION DATE
Use of Observations & Measurements and Sensor Web Enablement-related standards in INSPIRE	INSPIRE Cross Thematic Working Group on Observations & Measurements	INSPIRE Cross Thematic Working Group on Observations & Measurements	en	Data Specifications	08/04/2014
Version: 2.0	Is this the latest version?  YES				
DESCRIPTION					
This document describes the use of Observations & Measurements and Sensor Web Enablement-related standards in INSPIRE data specification development. This version (version 2) reflects the content of Regulation (EU) No 1253/2013 (the Annex II+III amendment to Commission Regulation (EU) No 1089/2010).					
URL					DOCUMENT TYPE
DOWNLOAD THIS DOCUMENT					Framework Document

<http://inspire.ec.europa.eu/index.cfm/pageid/2>

4.1.1 Observations

An Observation is an action whose **result** is an estimate of the value of some **property** of the **feature-of-interest**, at a specific point in **time**, obtained using a specified **procedure**

after Cox 2008

class Figure 2: Observation Core

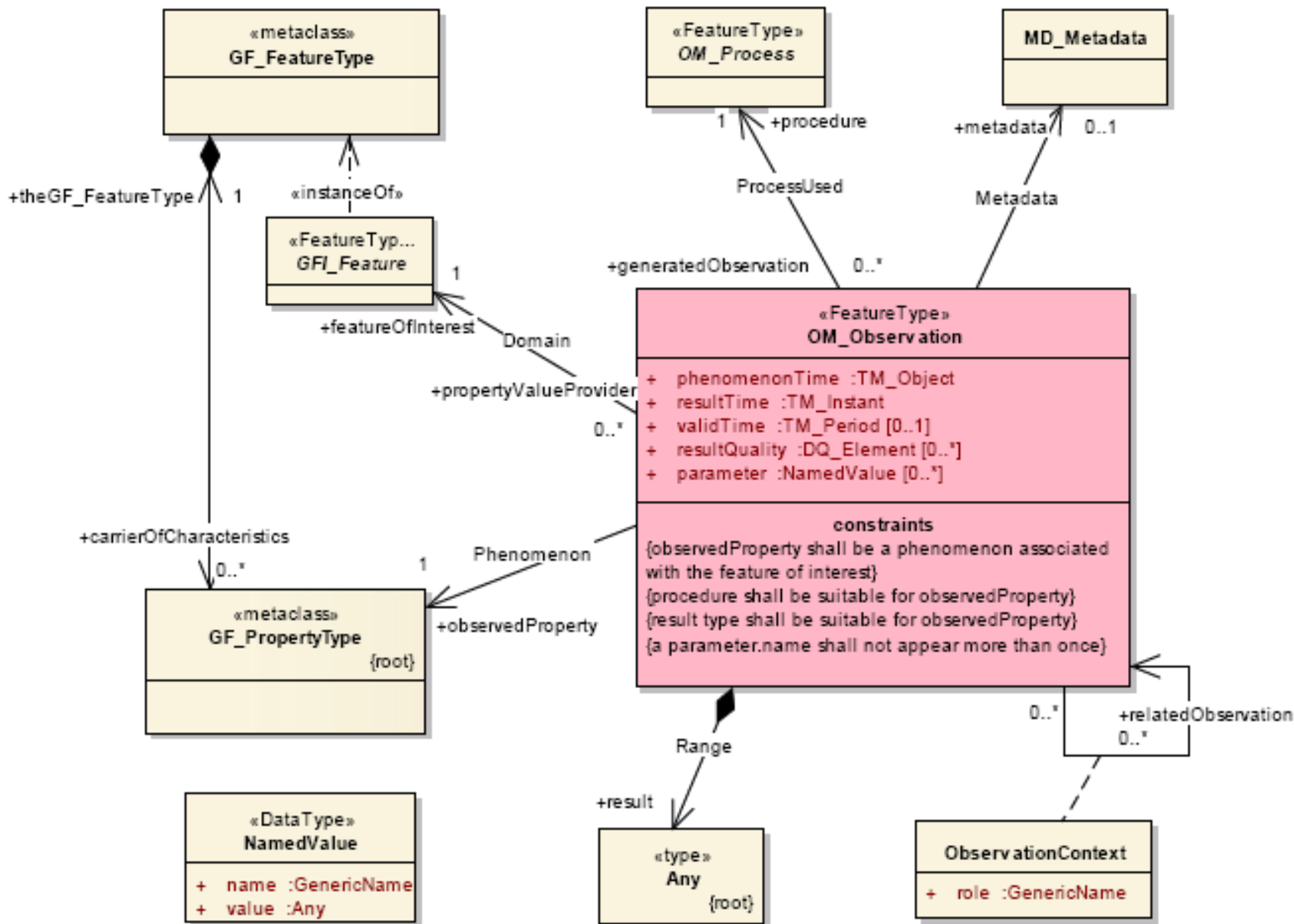
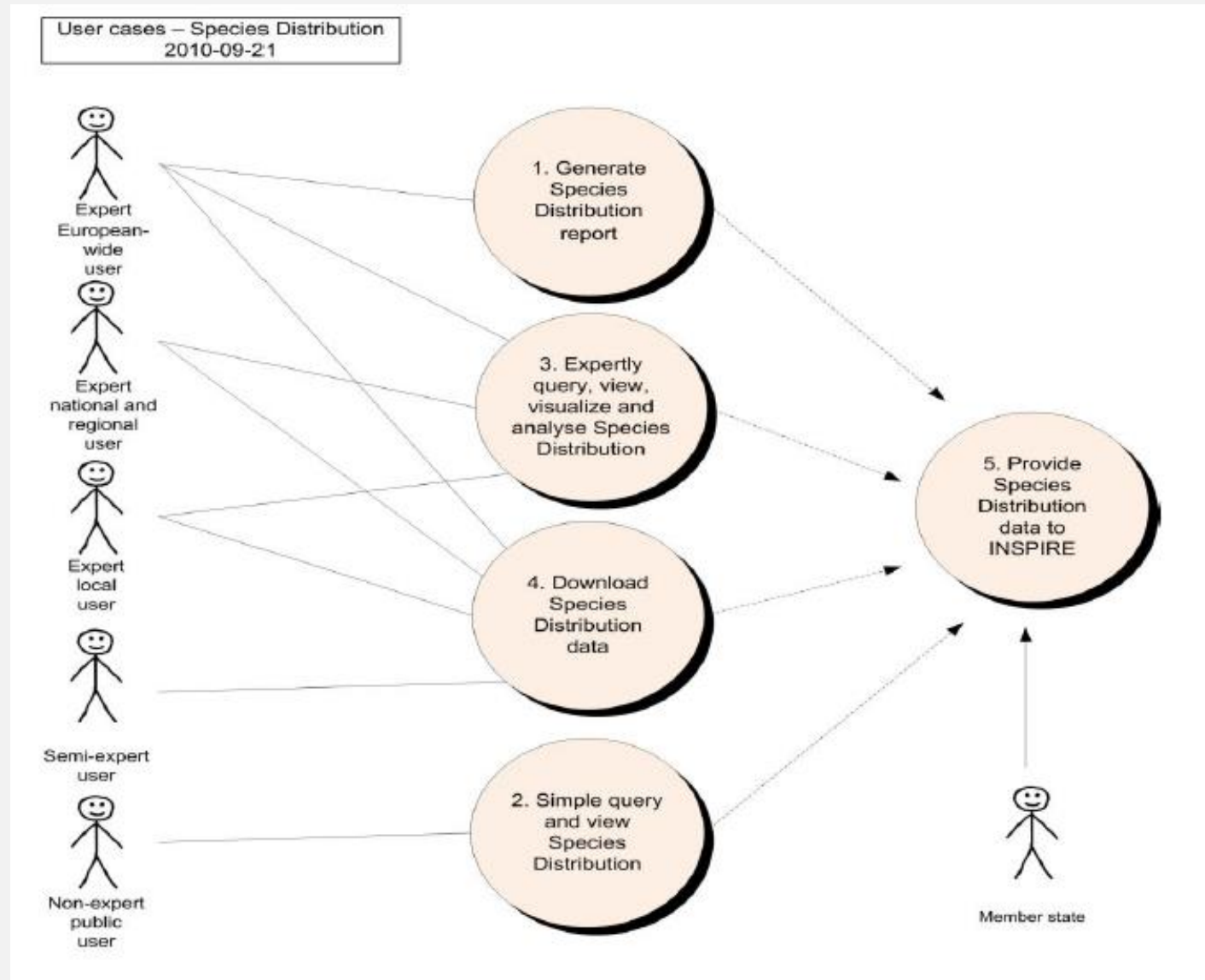


Figure 1: The basic Observation type

Última reflexión: para qué esto



Francisco Pando
Unidad de coordinación, GBIF España
Real Jardín Botánico - CSIC
Claudio Moyano 1, 28014 Madrid, Spain
pando@gbif.es
www.gbif.es



<http://creativecommons.org/licenses/by-sa/3.0/es/>

*GBIF-ES es el Nodo Nacional de Información sobre Biodiversidad
patrocinado por el [Ministerio Español de Economía y
Competitividad](#), gestionado por el
[Consejo Superior de Investigaciones Científicas](#)*

